

St. Odilia Spring 2018 MAP Results

St. Odilia completed its fifth year using the Northwest Evaluation Association's (NWEA) standardized tests, the Measures of Academic Progress (MAP). We are proud to say that St. Odilia students' average scores again saw slight increases overall from the previous year. MAP tests are computer administered and scored achievement tests designed to measure growth in student learning for individual students, classrooms, and the school as a whole. Tests for mathematics and reading are given to grades K-8. Tests for language usage are given in grades 2-8. St. Odilia administers MAP in the fall and spring to all students. For the first time, students in grades 5 and 7 were given the science test in the spring.

Scores are reported in RIT units. The RIT Scale is a curriculum scale that uses individual item difficulty values to estimate student achievement. The RIT scale is an equal interval scale. Equal interval means that the difference between scores is the same regardless of whether a student is at the top, bottom, or middle of the RIT scale, and it has the same meaning regardless of grade level.

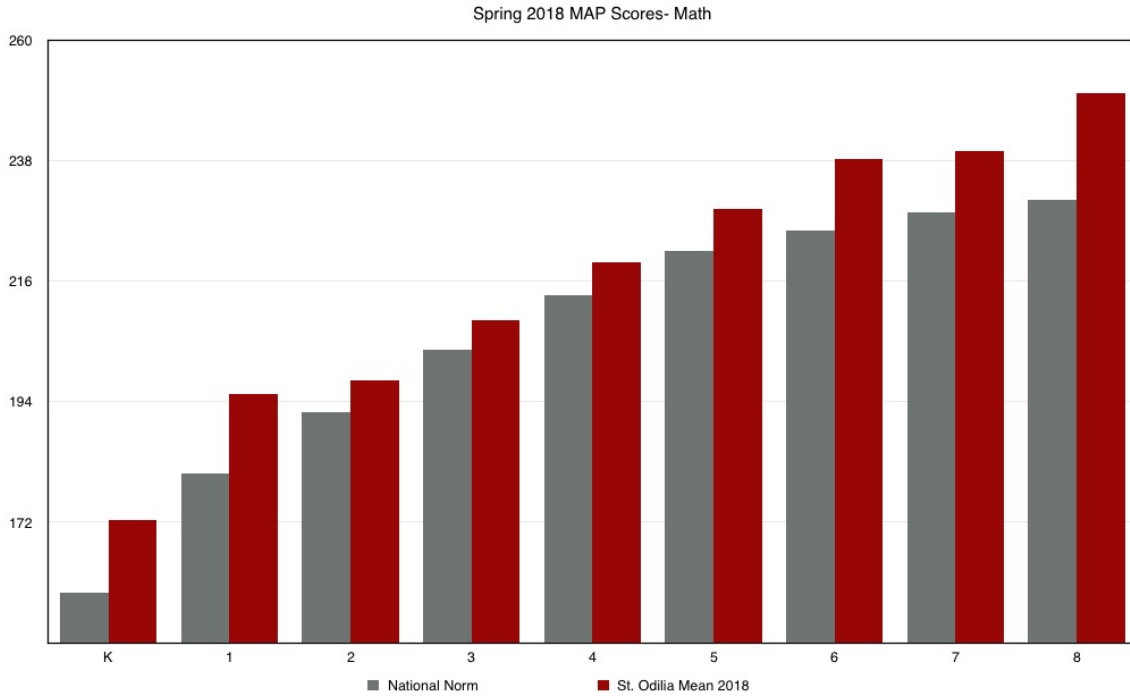
St. Odilia students' average scores in math, reading, and language are higher than the national average in every grade level, with many grade's averages in the 90th percentile or above nationally. St. Odilia averaged more the nine RIT points above the national average- amounting to a full grade level or more above national norms in most grades.

Just as impressive, 41% of students scored in the 80th percentile or above in math, 41% scored in the 80th percentile or above in reading, and 47% scored in the 80th percentile or above in language.

St. Odilia also took the general science test in 5th and 7th grades in the spring this year with impressive results! Over 65% of our 5th grade students and 80% of our 7th grade students scored at or above the national average.

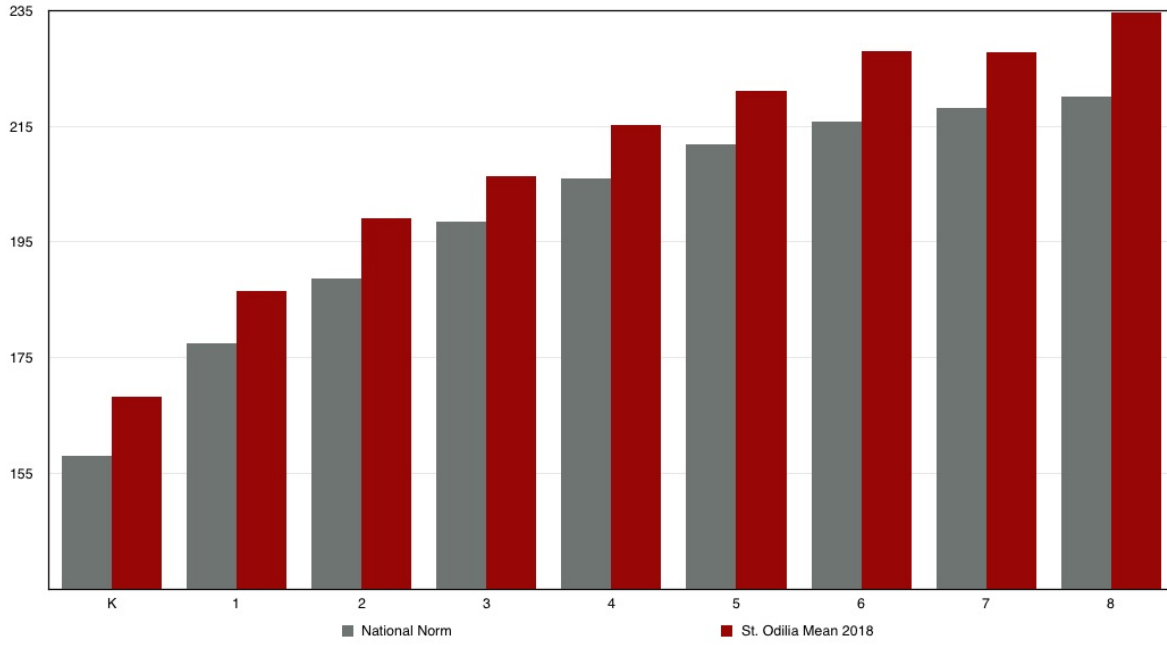
Below is a summary of St. Odilia's spring testing results. Each graph shows the average score for St. Odilia students at each grade level as compared to the national average at that grade level.

St. Odilia School 2018 Spring Map Results



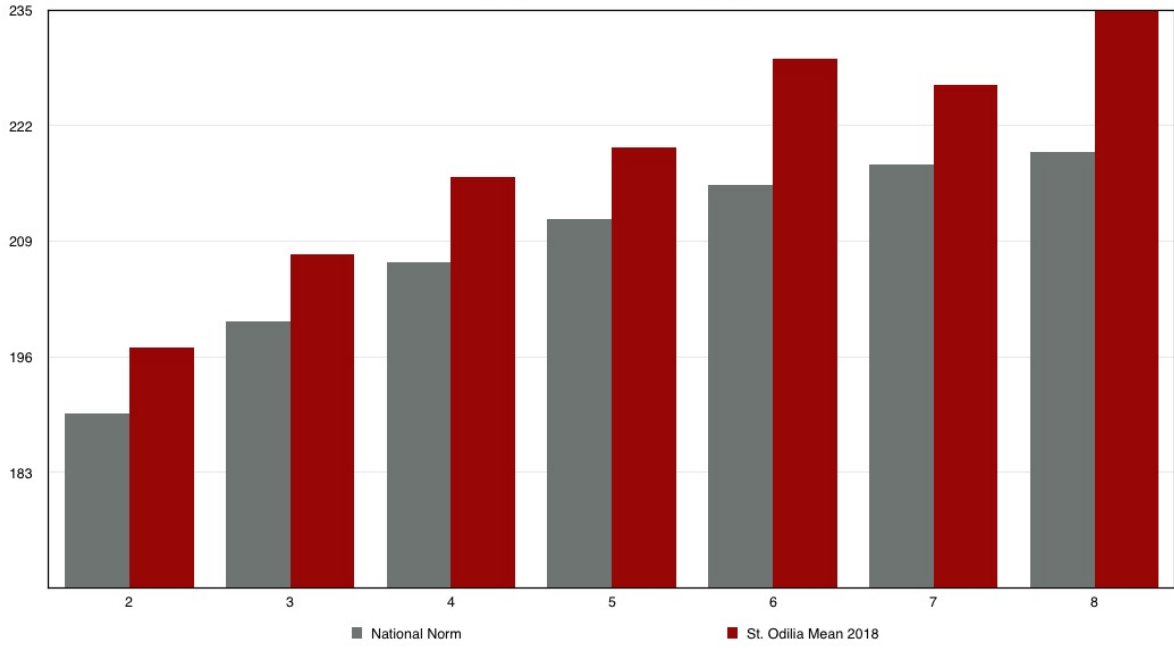
Grade	K	1	2	3	4	5	6	7	8
National Norm	159.1	180.8	192.1	203.4	213.5	221.4	225.3	228.6	230.9
St. Odilia Mean 2018	172.3	195.4	197.8	208.9	219.5	229.2	238.2	239.7	250.2

Spring 2018 MAP Scores- Reading



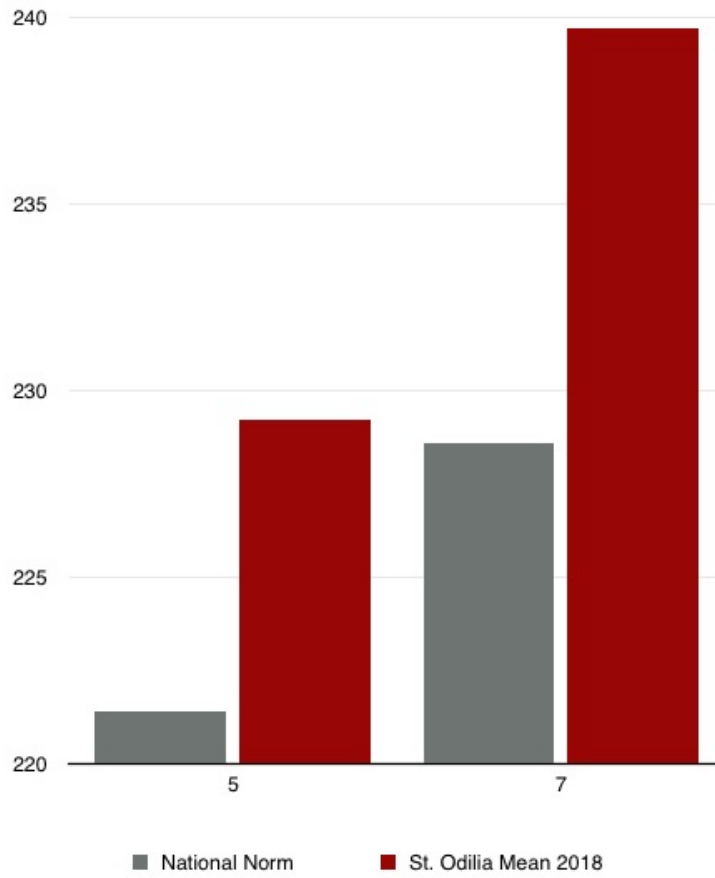
Grade	K	1	2	3	4	5	6	7	8
National Norm	158.1	177.5	188.7	198.6	205.9	211.8	215.8	218.2	220.1
St. Odilia Mean 2018	168.3	186.5	199.1	206.4	215.3	221.1	228	227.7	234.7

Spring 2018 MAP Scores- Language



Grade	2	3	4	5	6	7	8
National Norm	189.7	200.0	206.7	211.5	215.3	217.6	219.0
St. Odilia Mean 2018	197	207.5	216.2	219.6	229.6	226.6	237.2

Spring 2018 MAP Scores- Science



Grade	5	7
National Norm	221.4	228.6
St. Odilia Mean 2018	229.2	239.7